

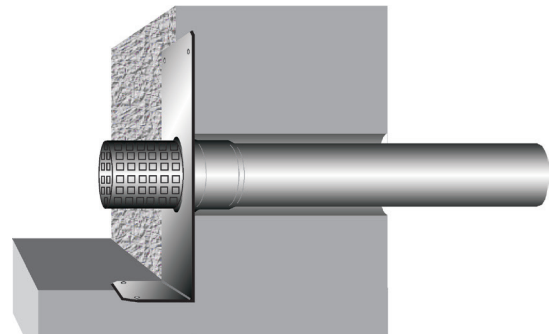
Specification sheet LX 1847

**Parapet drainage
VARIO upstand spout
for bending on site**

Emergency drainage

Gravity flow

Silent

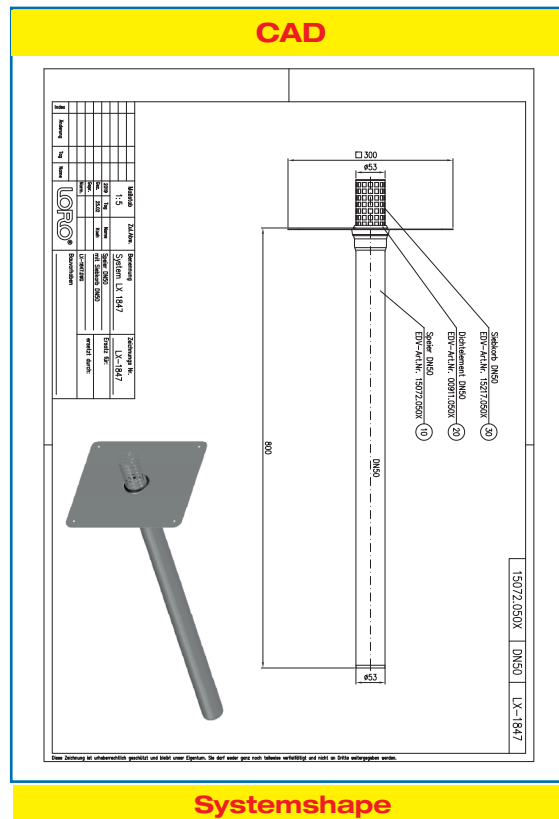
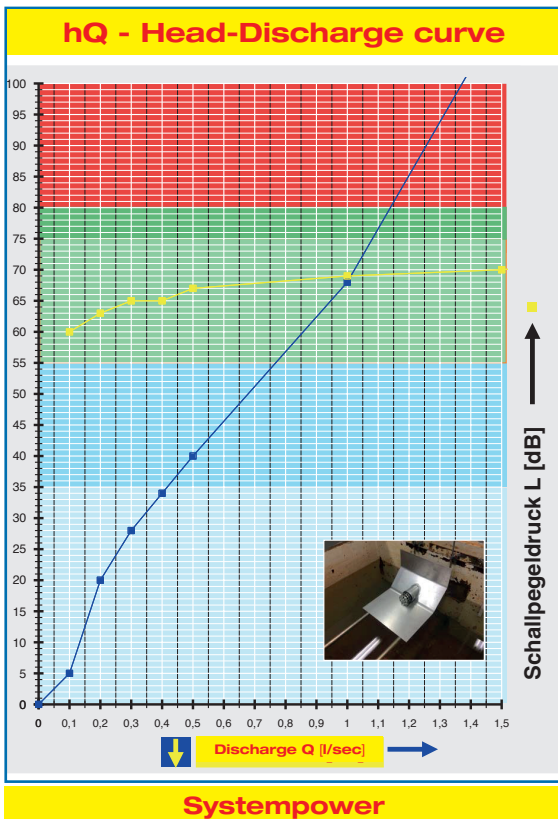


Note:
In this measurement, the point of origin of the flow graph is equal to the bottom edge of the pipe.

Discharge rate:	0,4 l/sec
Water height:	35 mm
Roof penetration:	0 mm
Diameter:	DN 50
LX-Number:	LX1847
Weir height:	-
Drain:	ventilated
Downpipe:	ventilated
Downpipe height:	-
Drainage:	on floor
Flange form:	Bonding flange

LX 1847 Piece list

- 1 x Art.-No. 15072.050X, LORO-X VARIO upstand Spout
- 1 x Art.-No. 15217.050X, LORO-X Strainer basket
- 1 x Art.-No. 00911.050X, LORO-X Sealing element
- 1 x Art.-No. 00986.000X, LORO-X Lubricant



Water height	mm	10	15	20	25	30	35	40	45	50	55	60	65	70	75	80	85	90	95
Discharge	l/sec	0,1	0,1	0,2	0,2	0,3	0,4	0,5	0,6	0,7	0,8	0,8	0,9	1,0	1,1	1,1	1,2	1,2	1,2
Silent																			

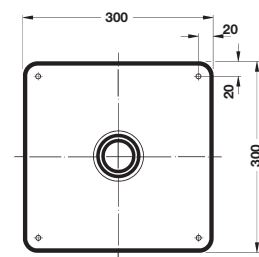
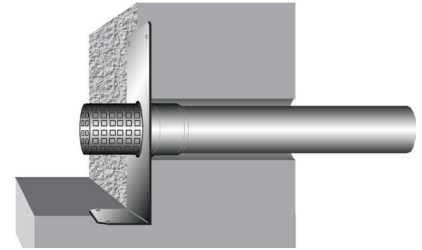
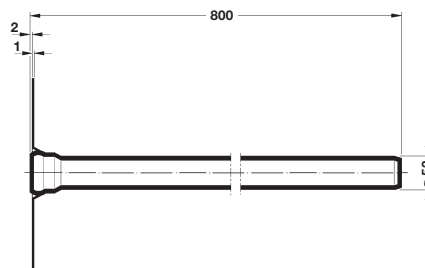
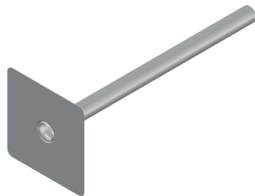
LORO-X VARIO upstand spout, for bending on site

DN 50

LX1847-20X

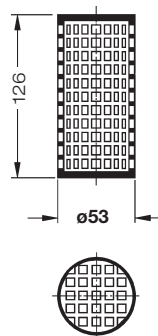
Drain Art.-No. 15072.050X
Weight: 1,8 kg

VARIO upstand
for bending on site



LORO-X Strainer basket

Art.-No. 15217.050X



Heat tracing: Lorowerk recommends to check all drains and pipes with regard to their frost-sensibility. Where necessary, these parts should be upgraded with heat tracing.